

What I need to know by the end of this unit:

- How to use annotation to explain what they like and dislike about their work.
- How to use a sketchbook to plan a sculpture, showing early use of the planning process.
- How to suggest improvements to their work by recording changes and reflections in their sketchbook.
- How to manipulate and join recycled and man-made materials to create a sculpture.
- How to plan a sculpture through drawing.
- How to compare two sculptors and use their work as inspiration for their own artwork.
- How sculptors develop form when sculpting

Vocabulary Focus:

Mood is the emotion expressed by a person or something created by them.

Tone is how light or dark a colour is.

Form is shape in 3 dimensions (3D) or the illusion of shape in 3 dimensions (3D)

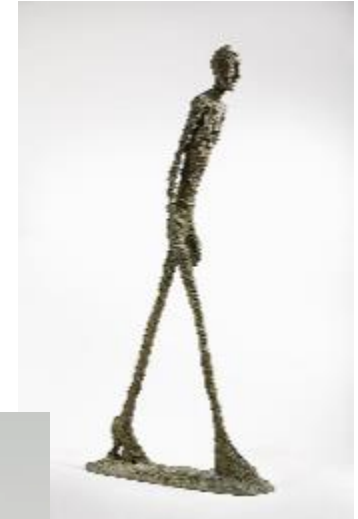
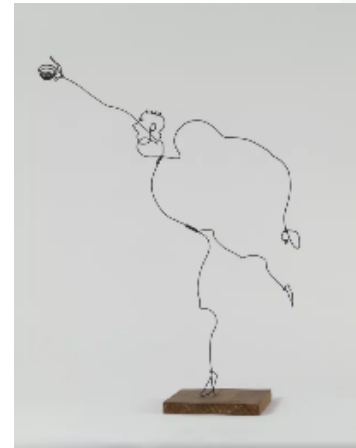
Manipulate means to use your hands or actions to change something on purpose.

Volume is how much *space* something takes up

Preliminary is an event or action that prepares for something else

Pose is how a figure is standing or moving.

What is similar or different about these two artists?



How can volume be added to a sculpture to create form?

